

ORC ECA 6 and ECA Root CA 4 certificates must be imported into your web browser to gain access to the iSAN, SANWeb, SCWD-D or Certification Center. You may already have these certificates installed, if this is the case there is no need to install them again. Follow directions under Step 24 to check for certificates.

If you do not already have these certificates you can download and import them from the External Certificate Authority (ECA) website at: <https://eca.orc.com/eca-repository/>

Process:

1. Go to the External Certificate Authority (ECA) website to find certificates
2. Download/open and import the ECA Root CA 4 Certificate
3. Download/open and import the ORC ECA 6 Certificate
4. Check to see if the certificates were installed

Go to the External Certificate Authority (ECA) website

1. Go to: <https://eca.orc.com/eca-repository/>

Download/open and import the ECA Root CA 4 Certificate

2. Select the **ECA Root CA 4 Certificate** link; see Figure 1
3. Select **Open**; see Figure 1

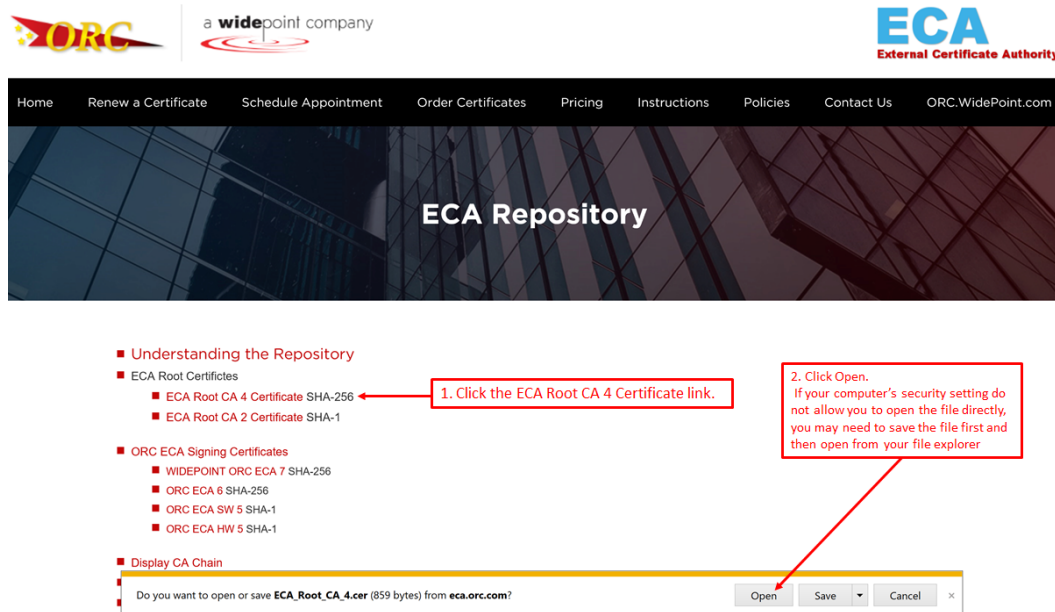


Figure 1

4. Select the **Install Certificate** button; see Figure 2
5. Select **Next**; see Figure 2

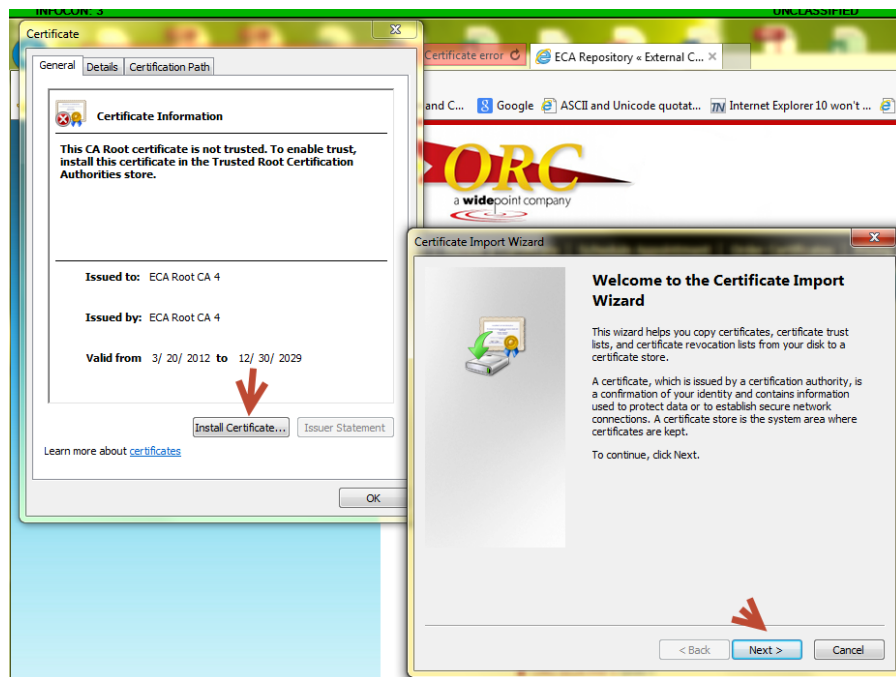


Figure 2

6. You will be taken to a Certificate Store window.
- Mark the **Place all certificates in the following store** radio button; see Figure 3
7. The Certificate store text box should say *"Trusted Root Certification Authorities"*, select the **Browse** button; see Figure 3.
8. Scroll down and select **"Trusted Root Certification Authorities"**, then the **OK** button; see Figure 3.
9. Select **Next**; see Figure 3.

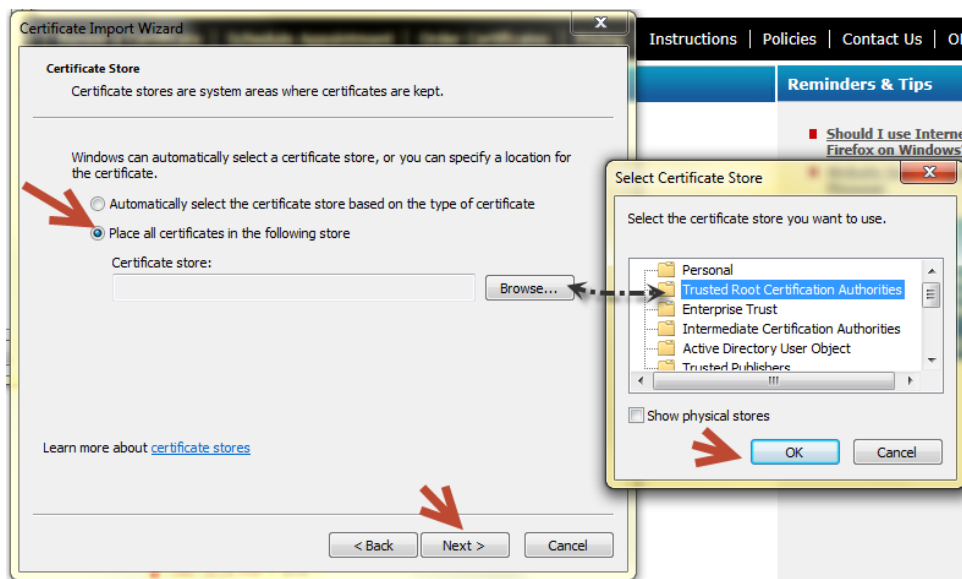


Figure 3

10. Select the **Finish** button; see Figure 4.

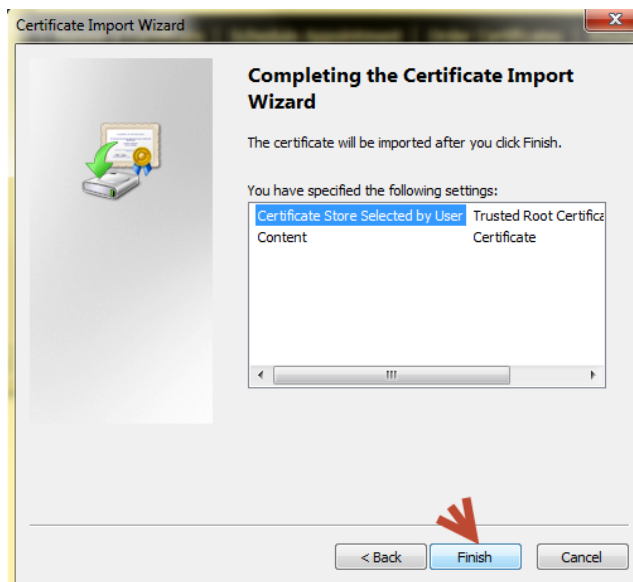


Figure 4

11. If asked "Do you want to install this certificate?", select the **Yes** button; see Figure 5.

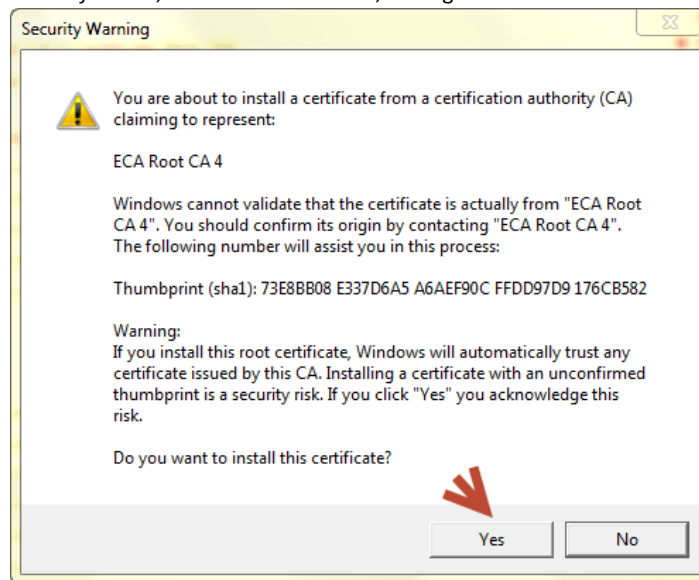


Figure 5

12. Select the **OK** button

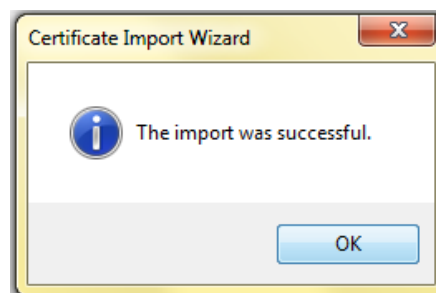


Figure 6

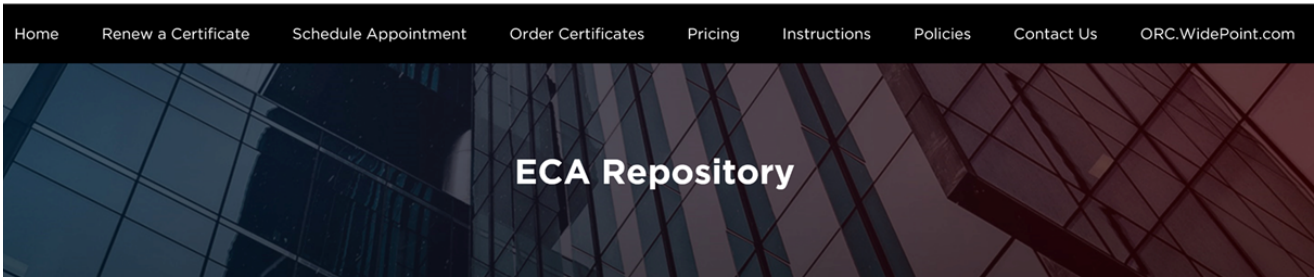
Download/open and import the ORC ECA 6 Certificate

13. Select the **ORC ECA 6** certificate link; see Figure 7
14. Select **Open**; see Figure 7



a widepoint company

ECA
External Certificate Authority



■ Understanding the Repository

■ ECA Root Certificates

- ECA Root CA 4 Certificate SHA-256
- ECA Root CA 2 Certificate SHA-1

■ ORC ECA Signing Certificates

- WIDEPOINT ORC ECA 7 SHA-256
- ORC ECA 6 SHA-256
- ORC ECA SW 5 SHA-1
- ORC ECA HW 5 SHA-1

1. Click the ORC ECA 6 link.

2. Click Open.
If your computer's security setting do not allow you to open the file directly, you may need to save the file first and then open from your file explorer

■ Display CA Chain

Do you want to open or save **ECA_Root_CA_4.cer** (859 bytes) from **eca.orc.com**?

Open Save Cancel

Figure 7

15. Select the **Install Certificate** button; see Figure 8
16. Select **Next**; see Figure 8

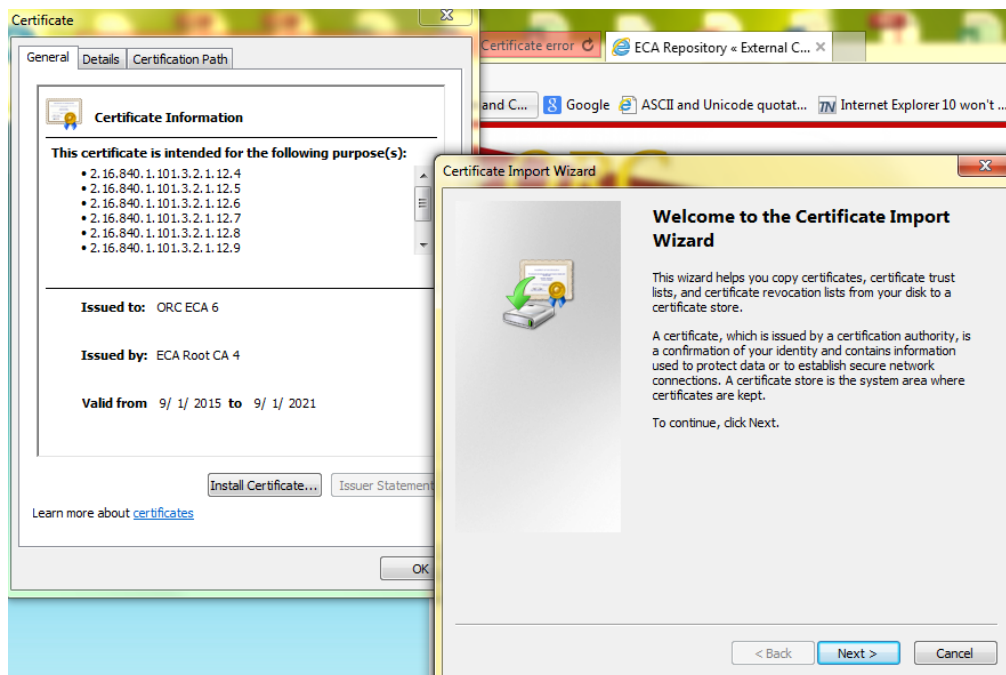


Figure 8

17. You will be taken to a *Certificate Store* window.
Mark the **Place all certificates in the following store** radio button; see Figure 9
18. The Certificate store text box should say *Intermediate Certification Authorities*, select the **Browse** button; see Figure 9.
19. Scroll down and select **Intermediate Certification Authorities**, then the **OK** button; see Figure 9.
20. Select **Next**; see Figure 9.

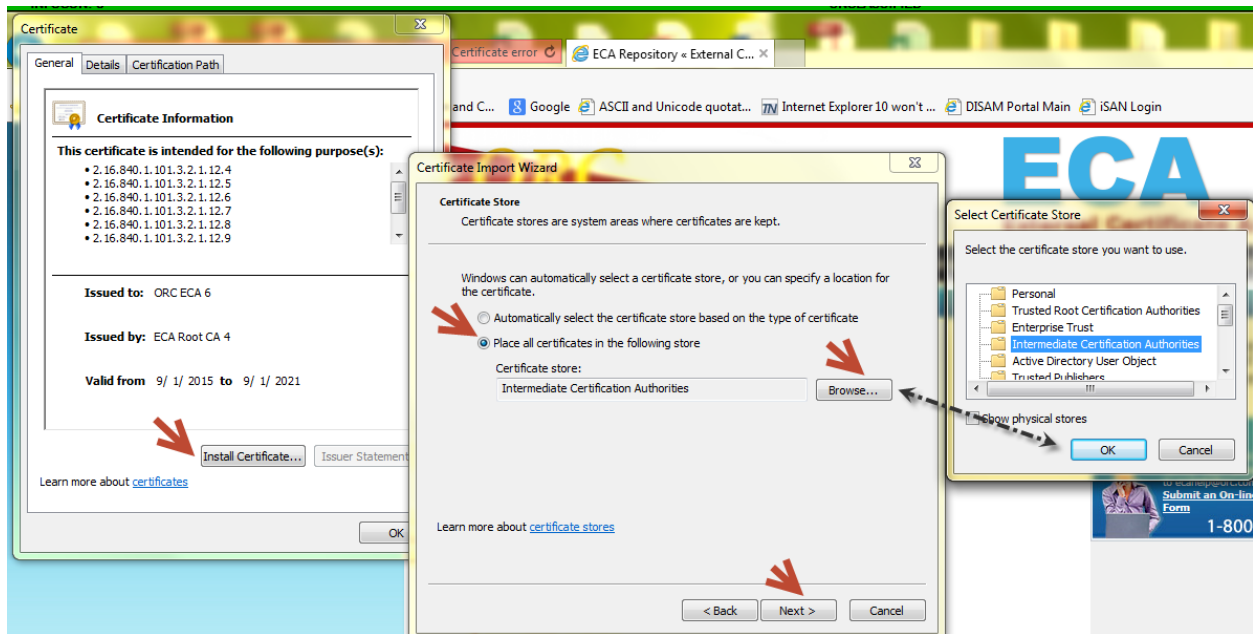


Figure 9

21. Select the **Finish** button; see Figure 10.

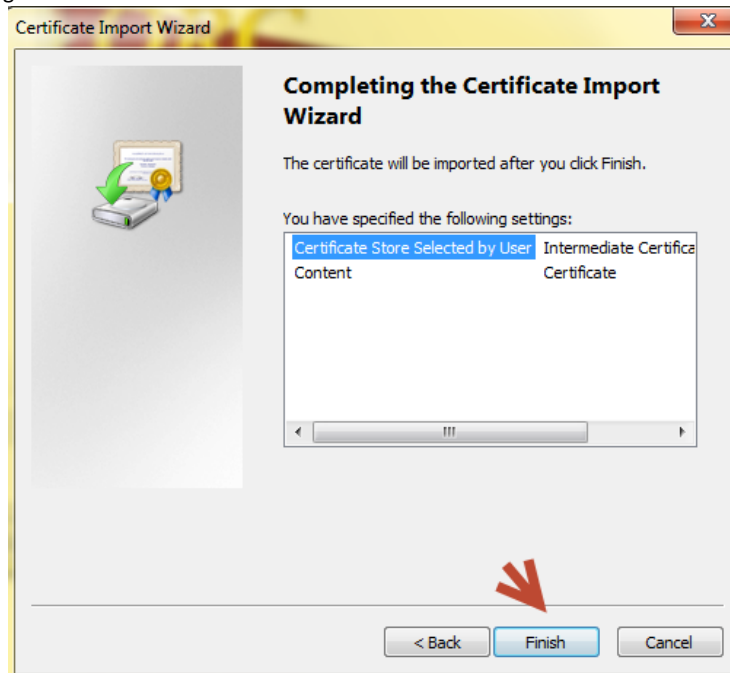


Figure 10

22. If asked “Do you want to install this certificate?”, select the **Yes** button.

23. Select **OK**; see Figure 11

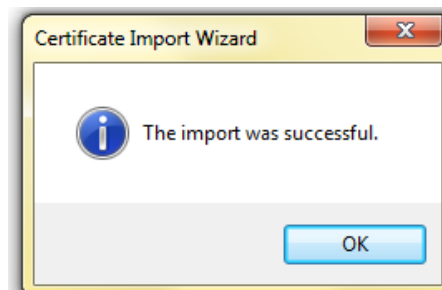


Figure 11

Check to see if the ORC ECA 6 and ECA Root CA 4 certificates were installed.

24. Check to see if the ORC ECA 6 and ECA Root CA 4 certificates were installed.

Internet Explorer; see Figure 12:

1. From the menu bar select **Tools > Internet Options**
2. **Select the Content tab**
3. Select the **Certificates** button
4. Select the **Intermediate Certification Authorities** tab
5. Scroll down and find **ORC ECA 6**
6. Select the **Trusted Root Certification Authorities** tab
7. Scroll down and find **ECA Root CA 4**

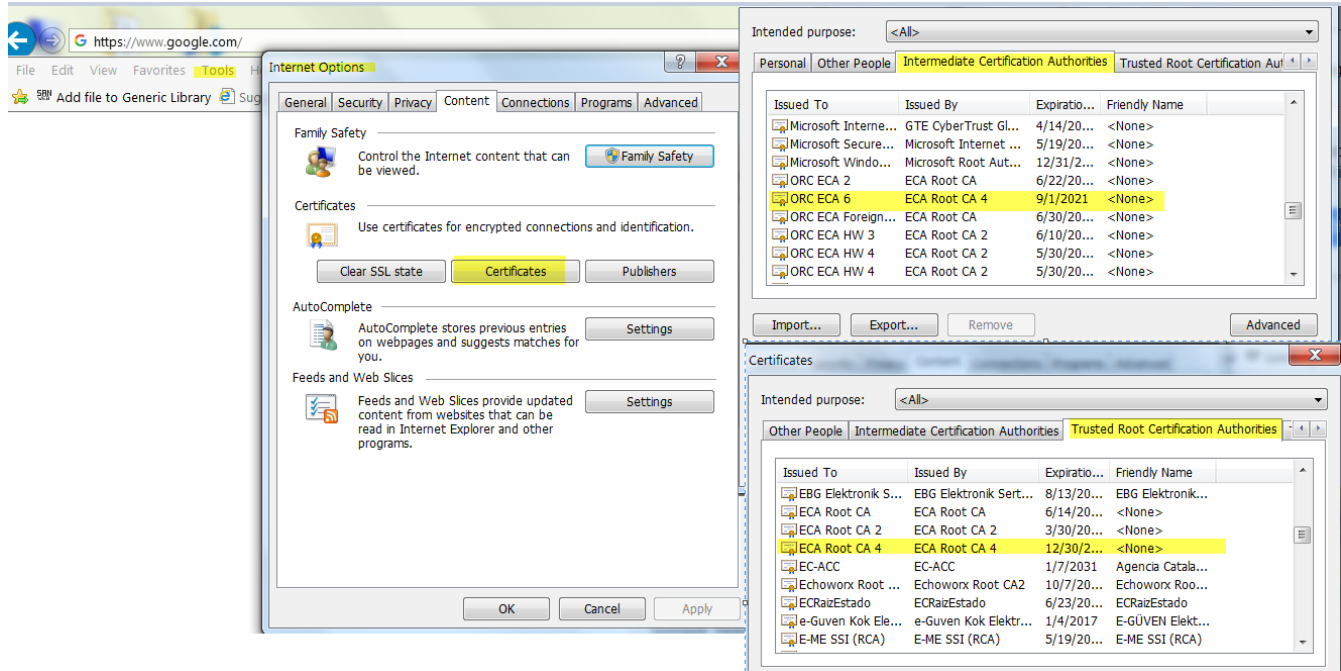


Figure 12

Google Chrome; see Figures 13 and 14:

1. Select the Chrome control options in the top, right-hand corner of the screen
2. Select **Settings**
3. Scroll down the list of settings, then select the **Show advanced settings...** link
4. Scroll down, find and select the **Manage certificates...** button
5. Select the **Intermediate Certification Authorities** tab
6. Scroll down and find **ORC ECA 6**
7. Select the **Trusted Root Certification Authorities** tab
8. Scroll down and find **ECA Root CA 4**

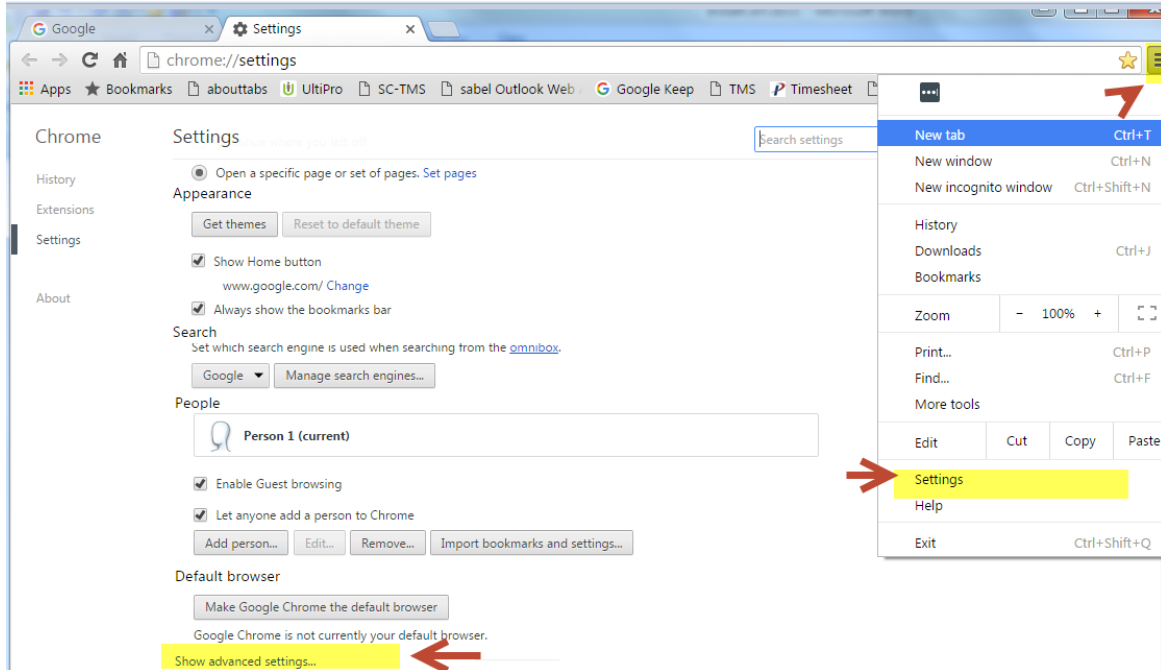


Figure 12

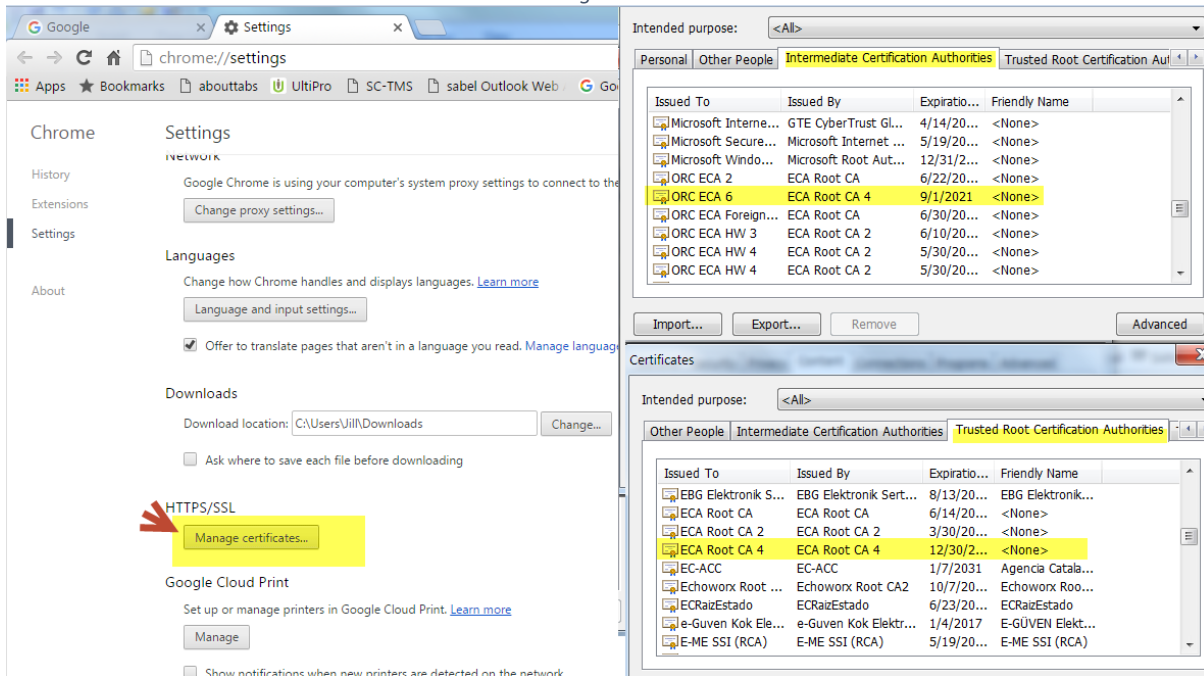


Figure 13